

2008 JORDAN LAKE SNAPSHOT



Volunteers started the water sampling in 2008. The average summer water clarity in 2008 was up to 16.2 feet (very good).

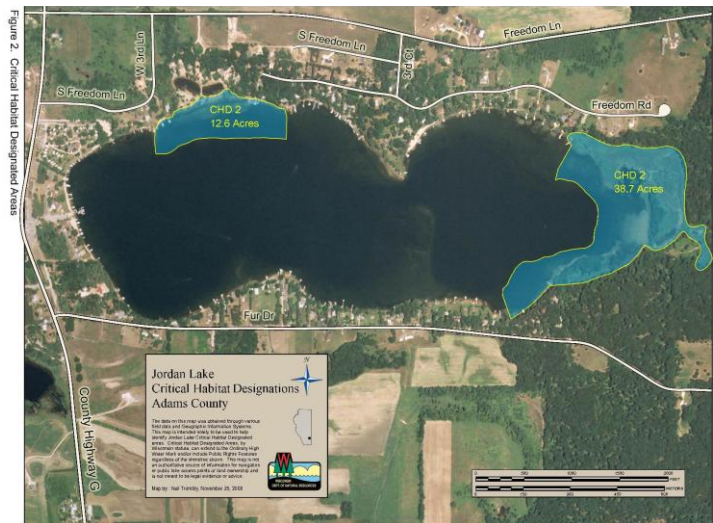
The average summer water temperature was 71 degrees Fahrenheit.

The average total phosphorus level went down to 10 micrograms/liter, which is low moderate. The chlorophyll-a summer average stayed low at 2.5 micrograms/liter.

In 2008, the lake was evaluated for the presence of areas that should be designated as “critical” or “sensitive” habitat.

After a field review and research, two areas were designated as critical habitat on Jordan Lake (see map at right).

Area JO1 covers about 2600 feet of the northwest shore of the lake. 29 native aquatic species were found here, including 7 emergents; 1 free-floating plant; 3 rooted floating-leaf plants; and 18 submergent species. The invasive Eurasian Watermilfoil was also found here.



Area JO2 is comprised of about 1800 feet at the far east end of the lake. 21 species were found here: 5 emergents; 1 free-floating species; 2 rooted floating-leaf plants; and 13 submergents. Both the invasive Eurasian Watermilfoil and Curly-Leaf Pondweed were also found here.