

Sections 26, 27, 34 and 35
Township 15 N Range 7 E
JACKSON TOWNSHIP
ADAMS COUNTY

GPS and Sonar Survey by
Sean and Karen Hartnett
Map by Sean Hartnett
Geographer UW-Eau Claire

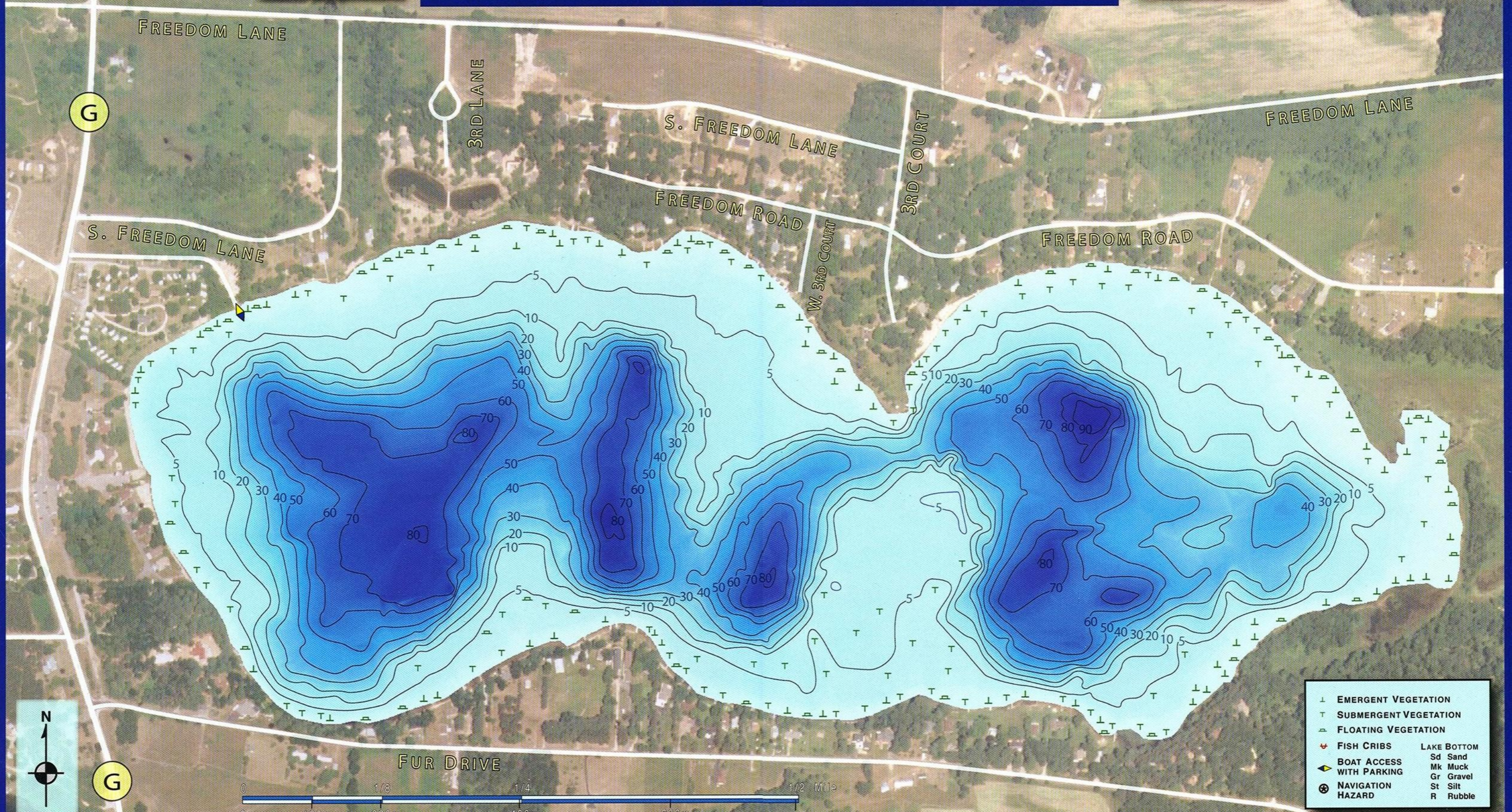
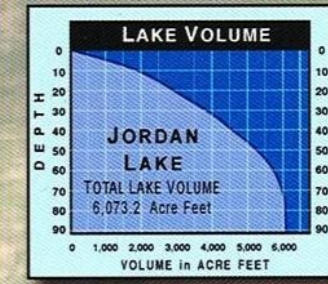
JORDAN LAKE

BATHYMETRIC MAP

Lake Surveyed July, 2008

Map Produced by
JORDAN LAKE REHABILITATION
AND PROTECTION DISTRICT

AREA 233.1 Acres
Under 3 Feet 33.4 Acres 14.3%
Over 20 Feet 106.6 Acres 45.7%
VOLUME 6,073.32 Acre Feet
SHORELINE 3.1 Miles
MAXIMUM DEPTH 92 Feet



- | | | | |
|---|--------------------------|-------------|--------|
| ⊥ | EMERGENT VEGETATION | | |
| T | SUBMERGENT VEGETATION | | |
| △ | FLOATING VEGETATION | | |
| ⋈ | FISH CRIBS | | |
| ⚓ | BOAT ACCESS WITH PARKING | | |
| ⊗ | NAVIGATION HAZARD | | |
| | | LAKE BOTTOM | |
| | | Sd | Sand |
| | | Mk | Muck |
| | | Gr | Gravel |
| | | St | Silt |
| | | R | Rubble |